

---

## How to connect Vista and WYSIWYG:

---

Stage 1: Ensure you have downloaded the WYSIWYG and Jands Vista software.

Stage 2: Ensure your computer(s) are configured correctly for network communication.

Stage 3: Download and install the Luminex Wygalizer

[http://www.luminex.be/products\\_details.php?cat=3&prod=0100022&display=downloads](http://www.luminex.be/products_details.php?cat=3&prod=0100022&display=downloads)

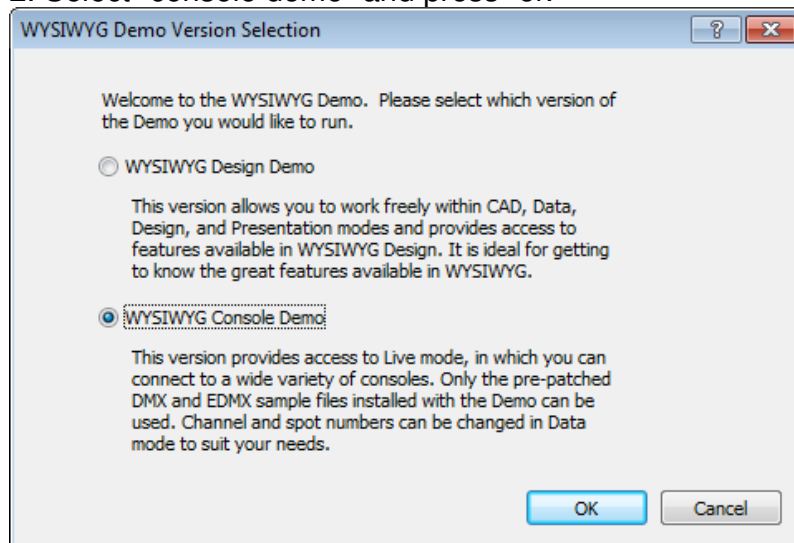
- Run the Wygalizer software.
- Select the IP address you expect to use (from stage 2).
- Press “ok”

Stage 4:

### Configuring WYSIWYG:

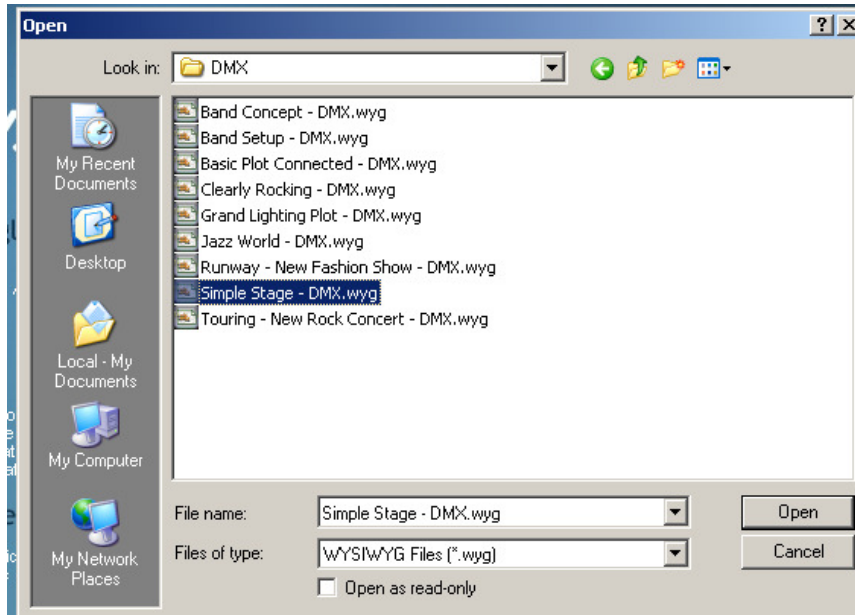
1. Launch the WYSIWYG release 28 demo. This is found as default under Programs> Cast software > WYSIWYG release 28 demo and viewer.

2. Select “console demo” and press “ok”

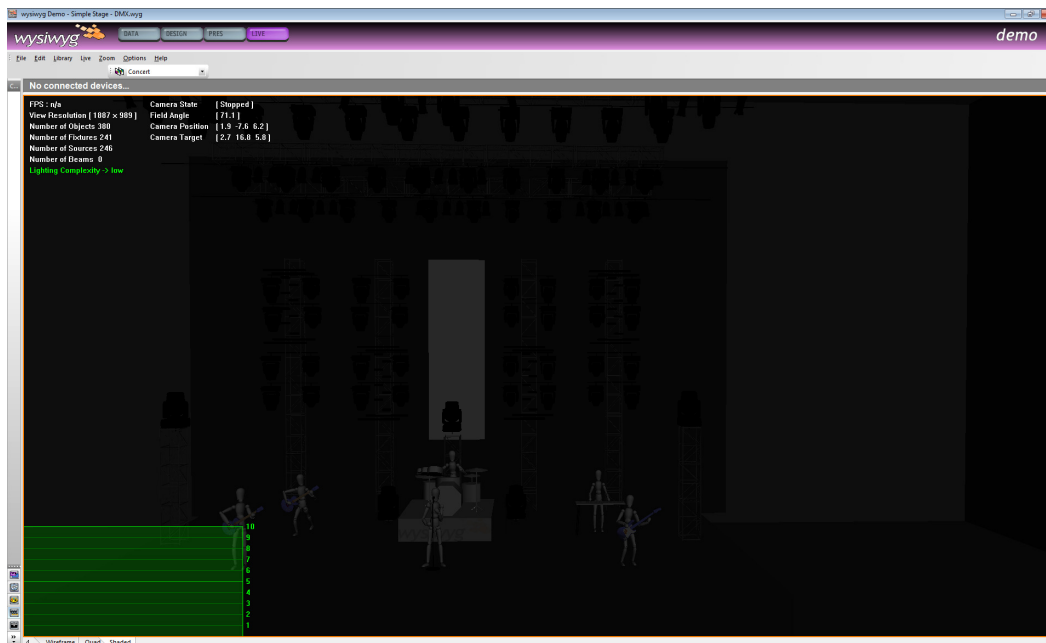


## How to connect Vista and WYSIWYG

3. WYSIWYG will now open. Press the open file icon in the centre of the screen. In the “samples” folder select the “DMX” sub folder and select “simple stage-dmx.wyg” and press “open”



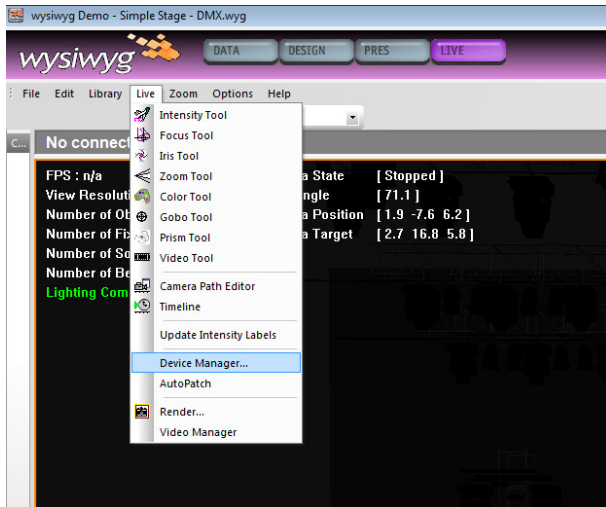
4. Your screen should now look like the one pictured below:



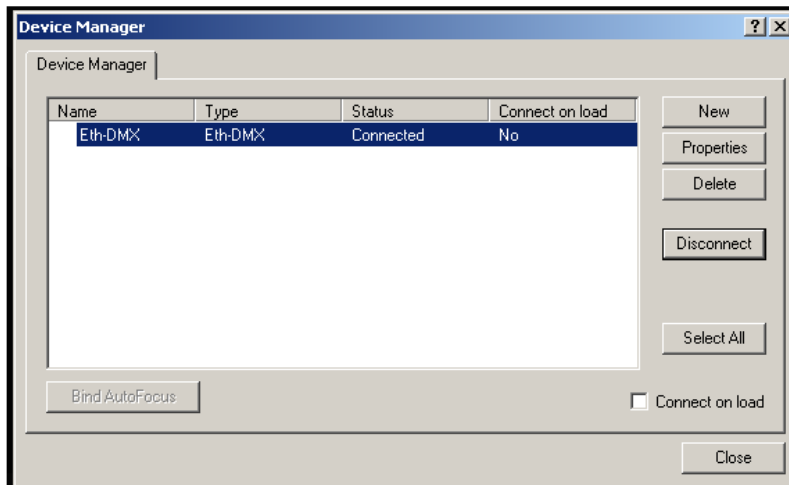
Ensure you are in the “live” tab, highlighted in pink towards the top left of the screen.

## How to connect Vista and WYSIWYG

5. Press the “live” drop down menu from the tool bar.
6. Press “device manager”



7. Select “Eth-DMX” device present and press “connect” to the centre right of the window. If successful a connected status should appear.



WYSIWYG is now configured to communicate with Vista.

## How to connect Vista and WYSIWYG

### Configuring Vista:

1. Ensure you have successfully downloaded and installed the Vista software.
2. Download the "Vista WYSIWYG demo showfile"  
<http://www.jandsvista.com/downloads/WYSIWYG%20Vista%20Demo%20Showfile.zip>
3. Double click this showfile icon. The Vista application will launch and open the demo showfile that relates to the WYSIWYG stage.

*All fixtures, and communication configuration, have already been set up.*

*You should now have control of the fixtures in your virtual stage.*

### Troubleshooting:

If you do not have control of your virtual fixtures OR you can not "connect" in the device manager of WYSIWYG *please refer to the appropriate "How to configure your network" document to ensure appropriate network communication.*

*"How to configure your network for **two** separate computers":*

<http://www.jandsvista.com/download/visualizers>

*"How to configure your network for a **single** computer":*

<http://www.jandsvista.com/download/visualizers>