
Configuring your network:

CONFIGURE THE NETWORK:

In order for Jands Vista and ESP Vision / WYSIWYG to communicate with each other they both need to be set up on the same network.

To begin, make sure that the IP addresses assigned to the 2 computers are on the same subnet. What this means, is that you must establish a valid TCP/IP connection between the 2 computers for Artnet to work. Here is a sample that will work:

Jands Vista Machine:

IP Address: 192.168.1.50

Subnet Mask: 255.255.255.0

ESP Vision / WYSIWYG machine:

IP Address: 192.168.1.75

Subnet Mask: 255.255.255.0

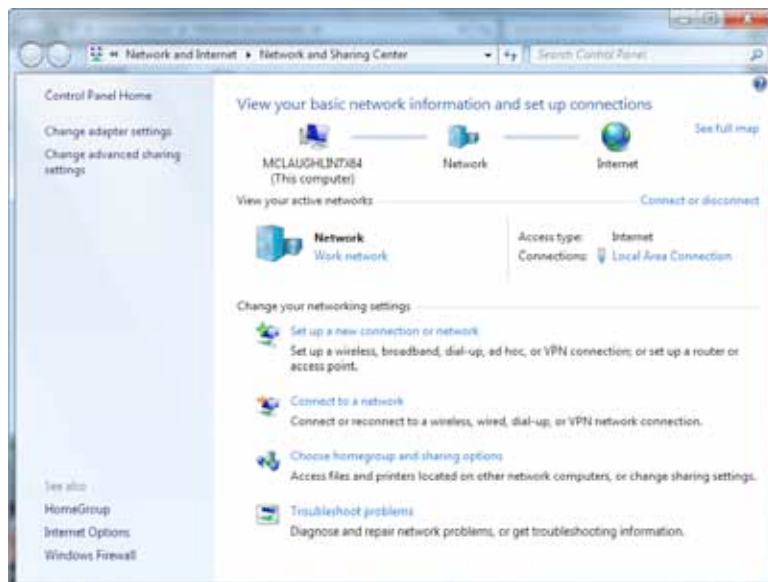
Disable all firewalls on both machines.

Disable wireless internet on both machines

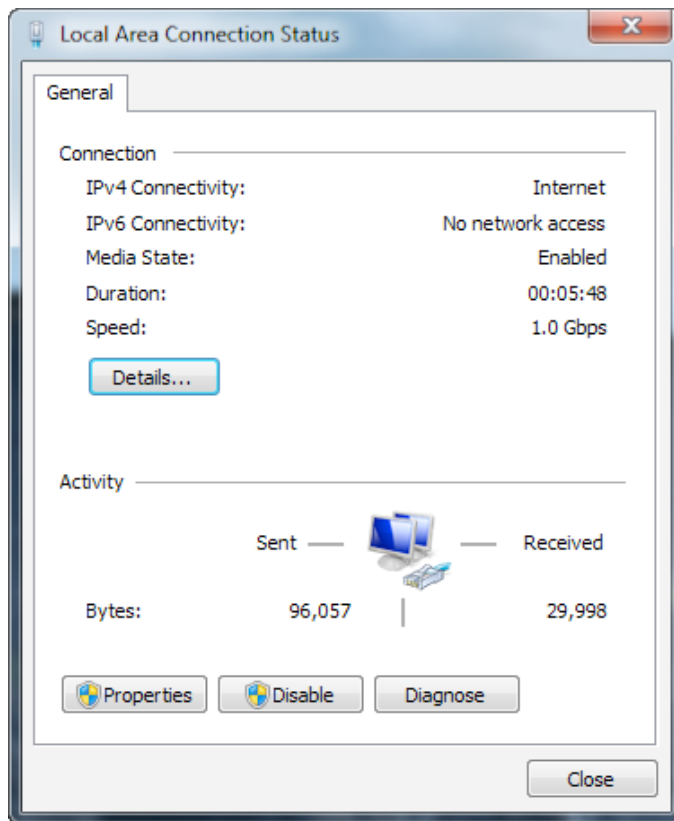
Disable all other network connections.

Setting a static IP on Windows:

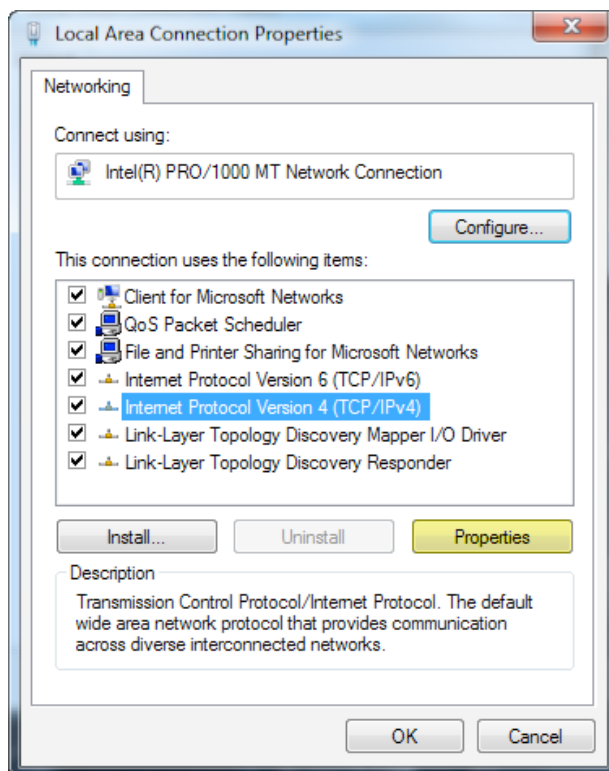
1. Assuming that you're in the *Category* view, you should navigate to the *Control Panel*, choose *Network and Internet*, and then click *Network and Sharing Center*. This is the window that you should see.



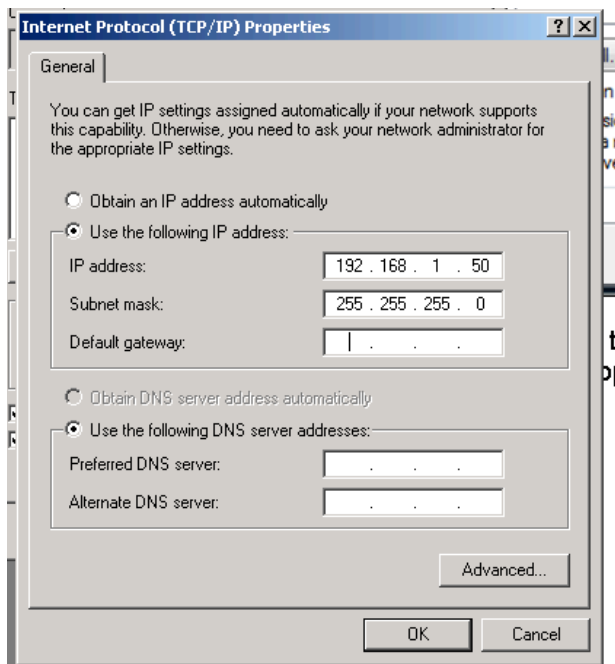
2. Click the *Local Area Connection* to begin configuring your static IP address.



3. Click the *Properties* button. It will show you the *Local Area Connection Properties* dialog. Click on the *Internet Protocol Version 4 (TCP/IPv4)* in the item box of the dialog window.



4. Click the *Use the following IP address* radio button and enter the appropriate values for your static IP address.



5. Click "ok" and apply all of your new settings.

Setting a static IP on MAC:

1. Open System Preferences, once there open Network



2. Click on the Ethernet connection we want to configure on the left hand side of the window.

3. In the configure IPv4 drop down, select "manually"



4. Now we can add the IP Address, Subnet Mask,



5 . Click “ok” and apply all of your new settings.

Your IP addresses should now be configured correctly. We can now move onto the next steps of installing Vista and your choice of visualizer.

To connect Vista to a ESP VISION / WYSIWYG on a single Windows computer:

STAGE 1:
CONFIGURE THE NETWORK: Loopback adaptor

In order for Vista and ESP Vision / WYSIWYG to communicate on a single Windows computer a loopback adaptor needs to be installed.

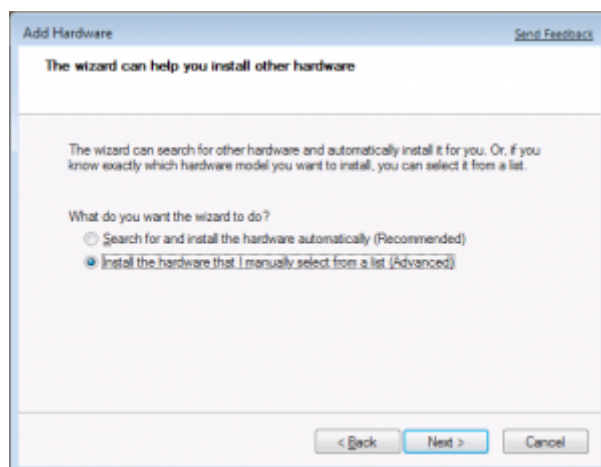
Ensure all other network connections are disabled (including wireless)
Disable all firewall settings.

To install a loopback adaptor in Windows 7:

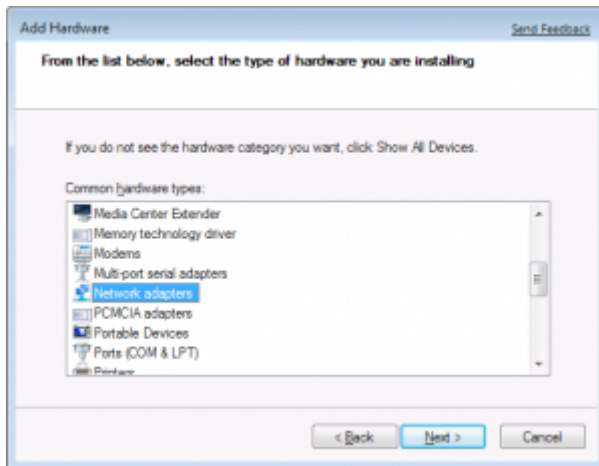
1. Click *Start – Search for cmd*, right-click *cmd* and select *“Run as Administrator”*
2. From the command prompt, run *“hdwwiz.exe”*. This should launch the *“Add Hardware Wizard”*. Click *Next*.



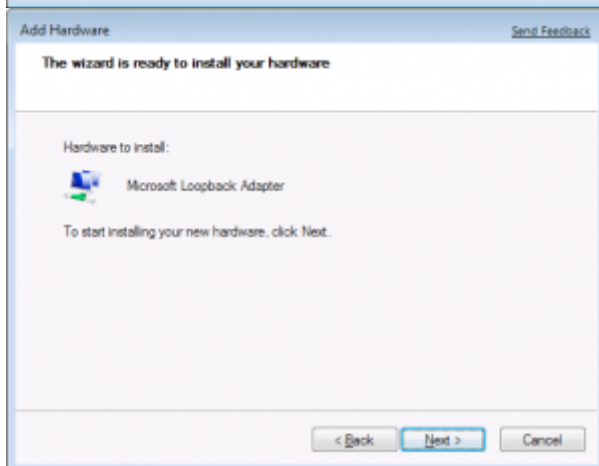
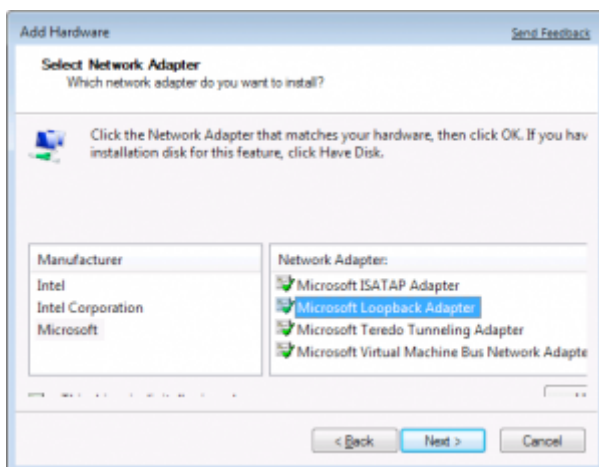
3. Select *“Install the hardware that I manually select from a list (Advanced)”* and click *Next*.

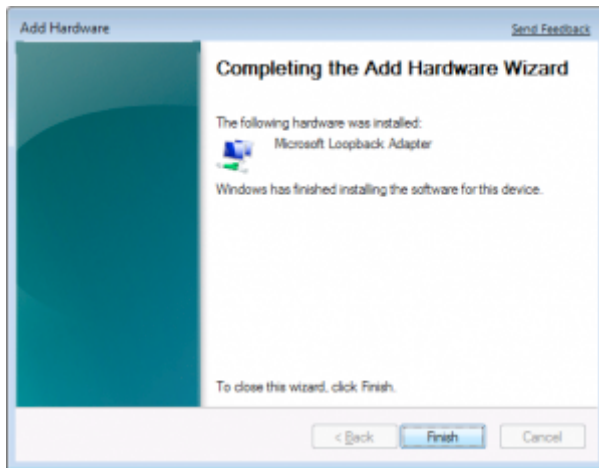


4. Now from the list select *Network Adapters* and click *Next*.

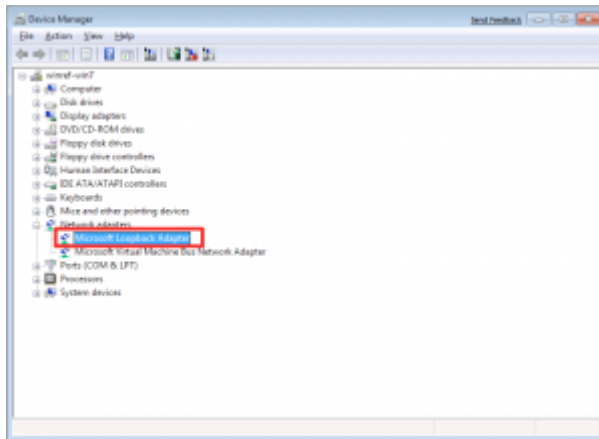


5. Under Manufacturers, select *Microsoft* and select "*Microsoft Loopback Adapter*" under Network Adapter and click Next. This should start the installation. Click Finish when the installation completes.





To confirm the loopback adapter installed, right-click Computer, select properties. Click Device Manager and expand Network Adapters and you can see the Loopback adapter installed there.



Your Loopback adaptor should now be configured correctly. We can now move onto the next steps of installing Vista and your choice of visualizer