

Configuring your network: Using a single windows computer:

Contents:

To connect Vista to ESP VISION / WYSIWYG on a single computer.....	2
Setting a loopback adapter in Windows	2

NOTE: Connection between ESP Vision and Vista on a single Mac is not possible at this time.

Troubleshooting.....	4
-----------------------------	----------

Configuring Your Network: Using a single Windows computer

To connect Vista to ESP VISION / WYSIWYG on a single Windows computer:

STAGE 1:

CONFIGURE THE NETWORK: Loopback adaptor

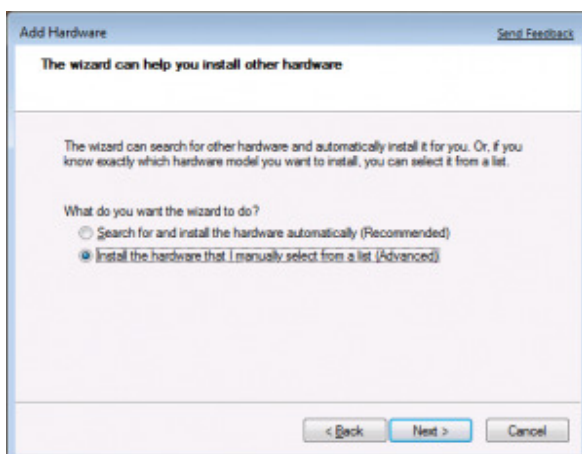
In order for Vista and ESP Vision / WYSIWYG to communicate on a single Windows computer a loopback adaptor needs to be installed.

To install a loopback adaptor in Windows:

1. Click *Start and navigate to the “control panel”*.
- 2.. *Once open press “add hardware” and press “next”*

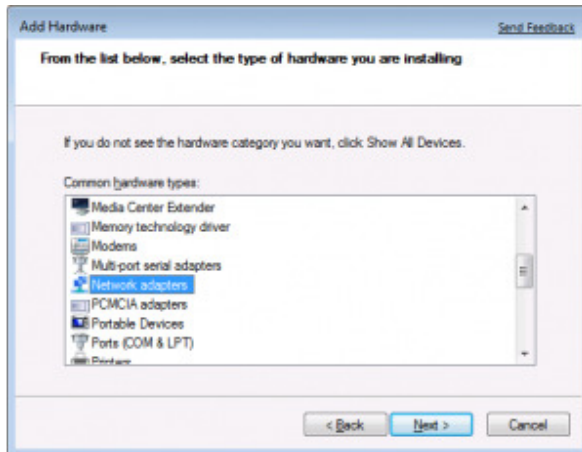


3. Select *“Install the hardware that I manually select from a list (Advanced)”* and click Next.

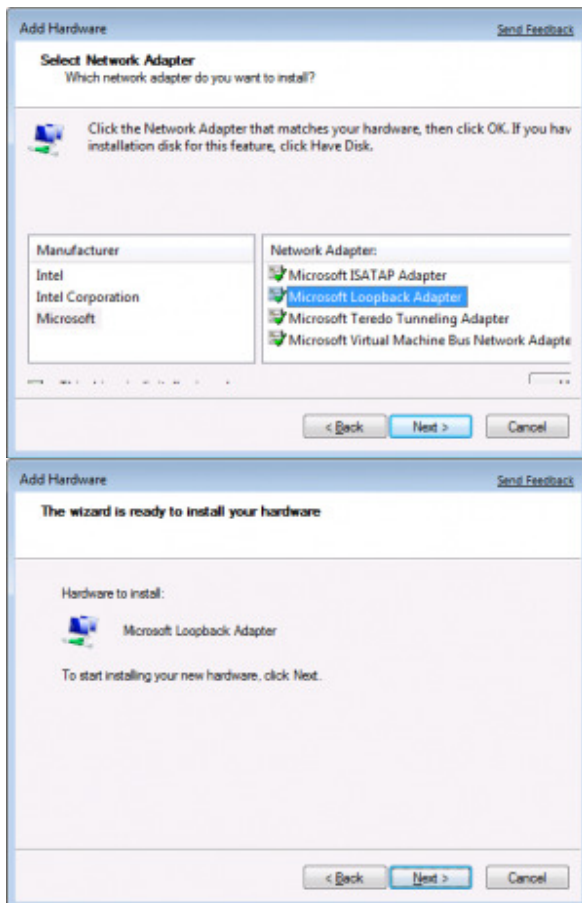


4. Now from the list select *Network Adapters* and click Next.

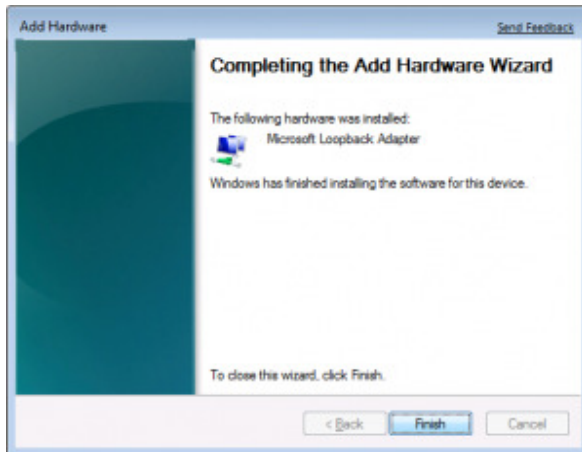
Configuring Your Network: Using a single Windows computer



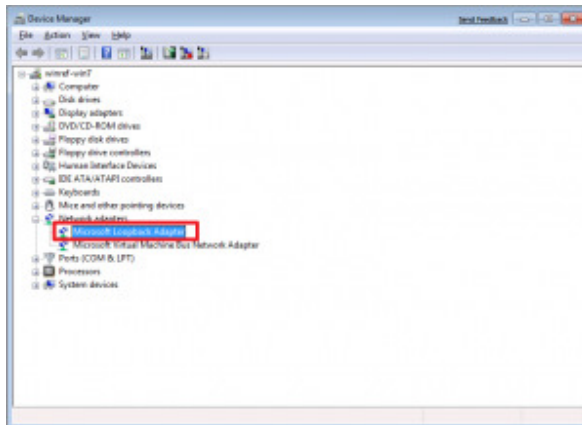
5. Under Manufacturers, select *Microsoft* and select "*Microsoft Loopback Adapter*" under Network Adapter and click Next. This should start the installation. Click Finish when the installation completes.



Configuring Your Network: Using a single Windows computer



To confirm the loopback adapter installed, right-click Computer, select properties. Click Device Manager and expand Network Adapters and you can see the Loopback adapter installed there.



Your Loopback adaptor should now be configured correctly. We can now move onto the next steps of installing Vista and your choice of visualizer

TROUBLESHOOTING:

If you have configured your network according to the steps in this document but can still not establish a connection between Vista and a Visualizer, please ensure:

- All firewalls are disabled on both computers
- All other network connections are disabled (other than the one you expect to use)