

VISTA V2

Simple, Powerful, Visual

Public Software Patch Release Notes

Software version:	2.1.9142	Released on:	20 January 2012
Supersedes version:	2.1.9123	Released on:	17 January 2012

Public Software Release Notification

Application installation packages for this software release are available for consoles, Windows PC and Mac OSX.

Installation of this software version on a T4, T2 or I3 will require using the ISO image file to update if you have not previously installed release version 2.1.9015. If release version 2.1.9015 was installed on your console then you can update by installing the update package.

Software Problems

We ask that users of the software report ALL cases of crashes or incorrect operation to support@jandsvista.com. Please include as much detail as possible, such as:

- The full software version number you were using.
- An exported copy of the showfile you were using.
- Detailed information about the problem you were seeing, what you were trying to do, and how you tried to do it. If possible, try to recreate the problem and tell us how.
- If you experienced a crash please retrieve the crash log files from your system and send them to Jands to enable the root cause to be determined and eliminated. More information on this can be found in Appendix A and B of this document.

Please note that Windows must be specially configured to generate crash log files BEFORE any crashes occur. Please read the instructions in Appendix B of this document and configure crash reporting before using the software on a Windows PC.

New Features and Improvements

There are no new features in this release.

Bugs fixed in this release

Bug	Description
4573	Software crashes when selecting a matrix containing mixed fixture types

Compatibility with Vista 1.13

Vista 1.13 fixture library files and show files CANNOT be used with Vista V2. Vista 1.13 patch files can be exported and subsequently imported into Vista V2.

Vista V2 and Vista 1.13 can be installed on the same computer, but should not be running simultaneously. If you intend to use Vista 1.13 and Vista V2 with an S3, S1, M1, UD512 or E2 wing, you will need to update Vista 1.13 to the latest release of that software (1.13.5295 or later). Please see Appendix D for more details on switching USB consoles between Vista V2 and Vista 1.13.

Jands Vista V2 includes many changes and enhancements from Vista 1.13. While the application functions similarly to Vista 1.13, time should be allowed for getting to know the software, as there are significant differences that may take time to get used to, in terms of both placement of functions and actual operation.

Installing the Vista V2 Console Image on a T2, T4 or I3 console installs both Vista 1.13 and Vista V2 software onto the console hard disk, allowing you to easily switch between using the Vista V2 software and the latest Vista 1.13 software by selecting the appropriate boot-mode during start-up.

To select the desired boot mode:

1. Start the console. Press the down arrow as soon as you see the large Vista logos. This will prevent the console from booting automatically.
2. Use the up and down arrows to choose one of the following the boot options:
 - **Vista2 (Normal)** – Vista V2
 - **Vista2 (VNC)** – Vista V2 with VNC server running
 - **Vista1** – Vista 1.13
 - **Vista1-VNC** – Vista 1.13 with VNC server running
3. Press the Enter key to start the console in the selected mode. Note that if an I3 console is to be changed from Vista V2 to Vista 1.13, the red and yellow modifiers must be held down when powering up until “Vista 2.x” is displayed in the upper-left LCD.

Installation Instructions (T2, T4 & I3 Consoles)

If installing Vista V2 software on a Vista T2, T4 and I3 console for the first time, the hard-drive in these consoles must be re-imaged from CD or USB stick, using the Vista V2 Console Image file.

Warning! Installation of this software on a T2, T4 or I3 console will erase all saved shows and other data. You must manually backup or archive all your existing show data (the contents of the /data/ directory) to an external storage device.

When T2 and T4 consoles start in Vista V2 for the first time the inbuilt Tablet / LCD and any additional monitors, touch screens or tablets may not be configured automatically. This may result in incorrect operation of the pen, and an upside-down display in some consoles. See the Known Issues section of these release notes for details on how to rectify this.

After installing the Vista V2 Console Image for the first time, subsequent Vista V2 Console Images can be applied with a “Re-use” option, which retains the existing hard-drive partitions, screen configurations, and User Data files. Also, application-only update packages can be applied using the Vista V2 Console Update files, and update package files for Vista 1.13.

To install the Vista V2 Console Image:

1. Download the latest Vista V2 Console Image file and burn it to a CD, or create a bootable USB drive. Instructions for how to create a bootable USB drive can be found in Appendix C of these release notes.
2. Insert the CD or bootable USB drive and restart the console. Note the BIOS settings in some older consoles may not have USB enabled as a boot device. If you have connected your bootable USB drive to your console, but the console still boots normally, please download the Vista T Series BIOS Restore Instructions from www.jandsvista.com and verify the BIOS settings are correct.
3. When the console is finished booting, the Console Software Installer will open. Note the Pen will not work during installation; use the touch pad or a mouse instead.
4. To install the dual boot software make sure that both the Vista1 and Vista2 check boxes are selected and click the Next button. The Confirm Installation window will open.
5. Select a Hard Disk to install to in the Target Disk Device box and select ‘Yes’ in the Proceed with Installation box.
6. Select ‘Initialise’ in the Partitions box, or if Vista V2 has been installed previously select ‘Re-use’, and click on the ‘Next’ button to start the installation. Note this will completely erase the hard disk – be sure you have already backed up any important data.
7. When the installation is complete, click the ‘Next’ button
8. Click the finish button to eject the CD (if present) and shutdown the console. Remove the USB drive or CD from the console.
9. When the console has fully shut down, press the Power button to restart the console.

To install a Vista V2 Console Update package:

If Vista V2 has been previously installed on a console, it is possible to apply most new software updates via a smaller Vista V2 Console Update package. To install a Vista V2 Console Update, first download the update file onto a USB flash drive, or FTP the file into the /Vista V2/UserData/Updates directory on the console.

1. Boot the console into Vista V2.
2. If updating via USB stick, insert the USB stick into a console USB port.
3. Select File → Quit Application. Wait for the System Settings dialogue to appear.
4. Click on ‘Apply Update’.
5. Click ‘Browse’.
6. If updating by USB, click on the USB flash drive in the list. If the file has been transferred via ftp, navigate to /Vista V2/UserData/Updates.
7. Select the desired update file.
8. Click “Open”.

9. The update package will appear on the left hand side of the dialogue. Click on the update package. The package contents are now inspected – wait until the cursor changes back from the hourglass.
10. Click 'Apply Update'. The software will now install the update package. When complete, a new dialogue will appear, warning that the console must be rebooted for the update to take effect.
11. Click 'OK'.
12. Click 'Quit'. T series consoles will now power down, while I3 consoles will reboot.

Unlike Vista 1.13, in Vista V2 there is no simple way to revert an update. If it becomes necessary to revert to a previous version the console must be re-imaged.

Installation Instructions (Windows XP, Windows Vista & Windows 7)

The Vista V2 software can be installed on a Windows PC running XP, Vista, or Windows 7. Both 32 and 64 bit versions of Windows are supported. The recommended PC should have an Intel i3 CPU, 2GB RAM, and 500MB disk space.

Note that if Vista 1.13 is to be run on the same machine, the Vista 1.13 version must be 5295 or later.

To install Vista V2 Windows Update files on a PC:

1. Close all open applications.
2. Disconnect/switch off all Jands Vista USB devices.
3. Launch the Vista V2 Windows Installer file. If an earlier version of Vista V2 is already installed on the PC, there's no need to un-install it - simply install the new version over the top of the old one.
4. Click 'Next'.
5. A location for the installed files is selected automatically. If required you can change the location. Click 'Next'.
6. A location for the User Data folder (your show files etc) is selected automatically. If required you can change the location. Click Install.
7. When the installation is complete, click Finish.

It is strongly recommended you now setup your PC to automatically generate crash report files. Details of how to do this can be found at <http://www.jandsvista.com/downloads/Tbilt134.pdf>

Installation Instructions (Apple Mac)

The Vista V2 software can be installed on an Apple Mac running OSX Snow Leopard or later.

Note that if Vista 1.13 is to be run on the same machine, the Vista 1.13 version must be 5295 or later.

1. Double-click on the Mac installer package downloaded from www.jandsvista.com to launch the installation wizard

2. At the Introduction window, click "Continue"
3. If this is the first time you are installing Vista, you will be asked to Select a Destination for the installation. Click on "Install for all users of this computer", and then click "Continue"
4. At the Installation Type window, click "Install"
5. You may be prompted for a password. If so, enter your password and click "OK"
6. During the installation procedure, a Sentinel Runtime window will appear, to install software to operate the USB Security Dongle. If you have previously installed the Sentinel Runtime, please skip this step. Otherwise:
 - a. Double click on the "Install Sentinel Runtime Environment" icon to launch the installation wizard
 - b. A notification will appear advising that this package will run a program to determine if the software can be installed. Click "Continue".
 - c. At the Introduction window, click "Continue"
 - d. At the License window, click "Continue"
 - e. Ensure you read and agree to the terms of the software license, and click "Agree"
 - f. At the Installation Type window, click "Install"
 - g. At the Summary window, click "Close"
7. In the initial Install Vista 2 window, click "Close"

Your software has now been installed.

Known Issues

Bug 3844: Tablet in T2 and T4 consoles is not automatically configured after re-imaging to Byron software

When T2 and T4 consoles start in Byron for the first time the inbuilt Tablet / LCD and any additional monitors, touch screens or tablets are not configured automatically. This will result in incorrect operation of the pen, and an upside-down display in some consoles. To configure the displays:

1. Using a mouse or the inbuilt trackpad, select File > Quit Application
2. In the System Settings dialogue that appears, click on "Display and Input Devices"
3. Choose the main Tablet / LCD type from the Screen #0 drop down. Normally this will be Wacom PL550 for V1 consoles or Wacom DTI520 for V2 or V3 consoles
4. Choose the external monitor 1 type, if connected, from the Screen #1 drop down. Byron supports the following monitors:
 - a. Wacom pen tablet models PL550, used in version 1 consoles,
 - b. Wacom DTI520 used in version 2 consoles.
5. ELO touch monitor "Intellitouch" models eg ET1715L.
6. Choose the external monitor 2 type, if connected, from the Screen #2 drop down.
7. Click OK to reset the graphics system

Bug 4534: OSX Tracking Backup Network Issues

There are a number of instances where network conflicts can arise when using tracking backup on OSX platform. These are particularly prevalent when the system has an active Airport adaptor. These can be eliminated by ensuring Airport is disabled in your system.

Jands recommends disabling Airport before using Tracking Backup.

Appendix A: Creating a Bootable USB Drive

Major upgrades, that require the console's hard drive to be erased, can be installed from a suitably formatted USB device. To create a USB FlashDrive that can be used to reinstall the operating system and Vista software on a T or I series console follow the steps below.

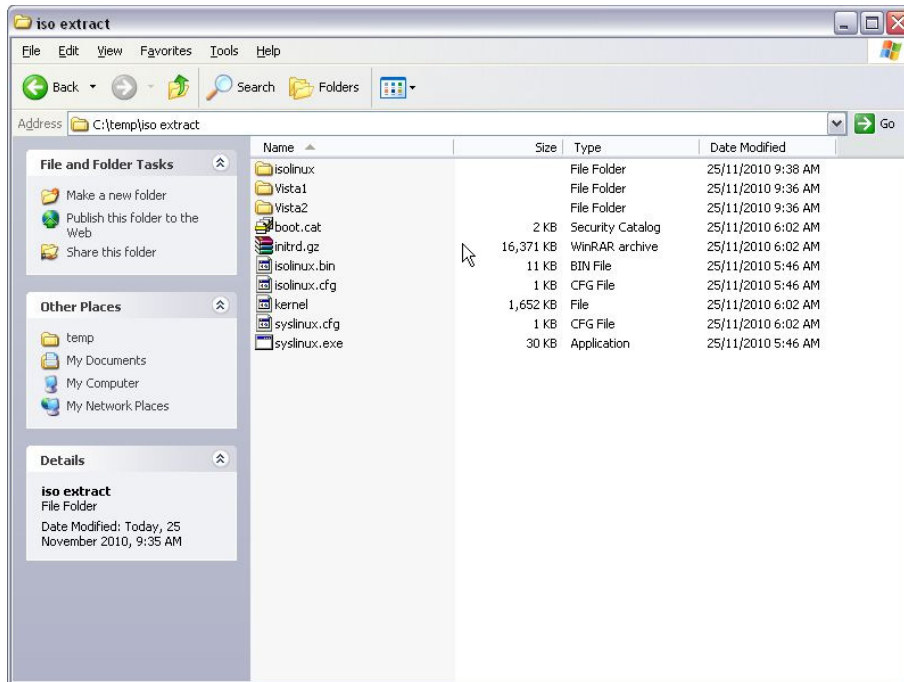
Using a PC

To use a USB flashdrive to boot the console and re-install the software, the drive needs to be 2GB or larger and it has to be converted into a Linux system disk. This procedure will erase all data on the FLASH drive and format it.

Once the FLASH drive has been converted, or if you have the original USB flashdrive supplied with your I3, you can use it for future updates. In this case please skip to step 4.

To convert the flash drive to a Linux System disk:

1. Some FLASH drives come with pre-installed software to help users manage the files on the drive. Uninstall this software.
2. Right-click on the USB Flash drive and selecting the 'Format' option from the popup menu. Take care that you have selected the Flash drive. If you select your computer's hard disk by mistake, you could erase it completely. Ensure the File System option is set to "FAT32" before clicking the 'Start' button.
3. Download and install a ISO file extractor program such as WinRAR. WinRAR is available from <http://www.rarlab.com>
4. Download the latest console ISO installer.
5. Open the console ISO image file with WinRAR.
6. Extract all of the files and directories within the ISO file to a temporary directory on your hard drive, for example to c:\temp\iso_extract. After the files have been extracted the directory should look something like the figure below:



7. Close the ISO file extractor.
8. Using a file manager, navigate to the `isolinux` directory of the extracted files, for example navigate to `c:\temp\iso_extract\isolinux`.
9. Copy all of the files from the `isolinux` directory to the 'root' of the extracted files eg from `c:\temp\iso_extract\isolinux` to `c:\temp\iso_extract`.
10. Copy all of the files and directories from the temporary directory eg `c:\temp\iso_extract` onto the root of the FLASH drive. Keep all files in the directories they were uninstalled in. This step takes a significant amount of time. When the copy is complete, the drive directory should look similar to the previous Figure.
11. Note the drive letter assigned to the Flash drive by Windows, e.g. 'E'. Open a command prompt and using this drive letter, type the following:

```
[Flash Drive letter]:syslinux -ma [Flash Drive letter]: -f
```

For example:

```
E:syslinux -ma E: -f
```

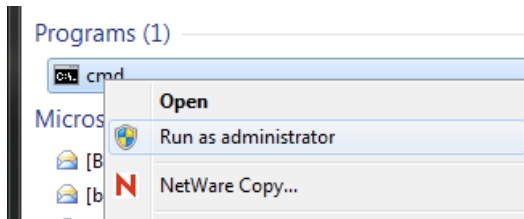
The FLASH Drive is now ready for use. Don't forget to eject the drive using the normal Windows procedure.

Please note: if using Windows 7 please ensure that you are running the command prompts as administrator. This is different to having administrator rights on a Win7 machine. To do this:-

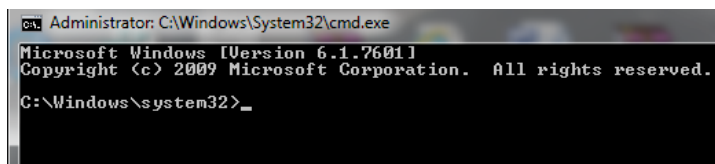
- *open the command prompt*
- *right click on the 'cmd' icon*



- *Select 'Run as Administrator'*



- *The command window will indicate status in top left corner*



- *Then type the commands as instructed above.*

Appendix B: Using S3, S1, E2 or M1 consoles with both Vista V2 and Vista 1.13

Using S3, S1 & M1

If Vista V2 is to be used on the same PC as Vista 1.13, Vista 1.13 must be version 5295 or later. Installations of both Vista V2 and Vista 1.13 may be installed on the same computer, but only one can be running at any one time.

Disconnect all Jands Vista USB devices before installing the new version of Vista 1 and Vista V2. Once both programs are installed, follow the procedures below to switch USB consoles between the two applications

To change from Vista 1.13 to Vista V2 (ie upgrade):

1. Exit Vista.
2. Disconnect or switch off any Jands USB consoles.
3. Launch Vista V2.
4. Reconnect or switch on the USB consoles.

To change from Vista V2 to Vista 1.13 (ie revert):

1. Exit Vista V2.
2. Disconnect or switch off any Jands USB consoles.
3. Launch Vista.
4. Press and hold the yellow and red modifiers on each USB console.
5. Reconnect or switch on the USB consoles.

Using an E2

Hold the 3rd and 4th buttons as illustrated when switching between application versions.



Diagnosing USB Driver Problems:

If your USB consoles fail to switch between Vista V2 and Vista 1.13 using the procedures above, there may be an issue with the USB driver versions.

The driver that Windows associates with a port/device combination can be found as follows:

1. Plug in the device and turn it on.

2. Go into Start -> Control Panel -> System -> Hardware tab -> Device Manager. A Jands Vista product that's been found will appear under "Jands LibUSB-Win32 Devices" – click on the "+" next to it to open it.
3. Right click on the device and select Properties -> Driver tab. The correct driver version for Vista V2 and Vista 1.13(5295) is "1.12.1.0".

If the loaded driver is not this version neither Vista V2 and Vista 1.13(5295) will not work with it. To replace the driver:

1. Plug in the device and turn it on.
2. Go into Start -> Control Panel -> System -> Hardware tab -> Device Manager. A Jands Vista product that's been found will appear under "Jands LibUSB-Win32 Devices" – click on the "+" next to it to open it.
3. Right click on the device and select Uninstall. Follow the prompts.
4. Remove the USB device.
5. Reboot the computer.
6. Install the most recent version of Vista V2. If Vista V2 runs at the end of the installation, exit Vista V2.
7. Plug in the USB device. After a few moments the computer should display the "Found new hardware" dialogue.
8. When Windows asks "Can Windows connect to Windows Update to search for software" select "No, not this time" and click Next.
9. When Windows asks about the installation CD select "Install from a list or specific location [Advanced]" and click Next.
10. When Windows asks you to choose your search and installation options select "Don't search. I will choose the driver to install" and click Next.
11. Select a driver that includes the text "1.12.1.0 [13/07/2010]" and click Next.
12. Click Finish.
13. Verify correct operation.